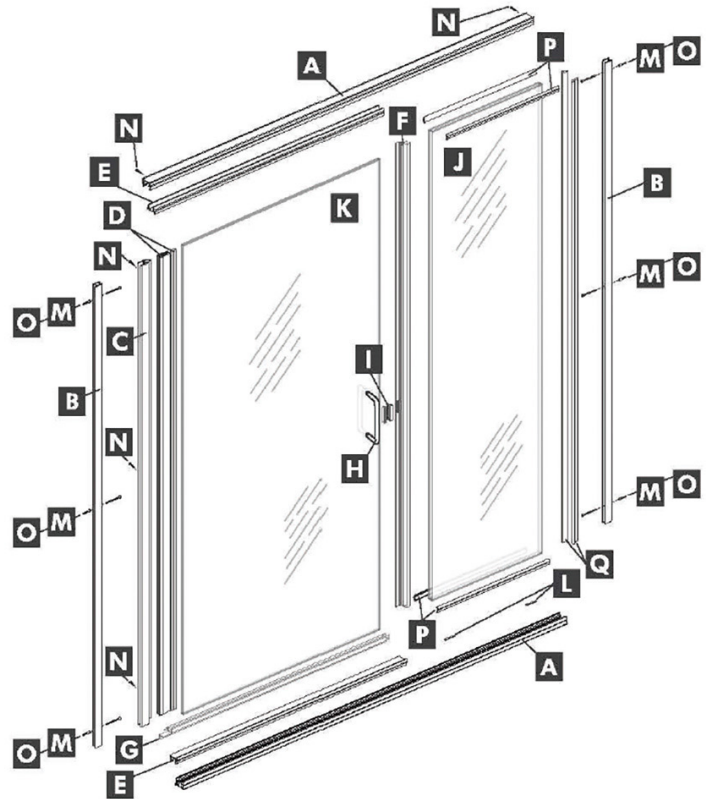


PARTS LIST

ITEM PART	DESCRIPTION	QTY
A	ZSS-3101 Curb	2
B	ZD-1006 Wall Channel for Hinge Jamb	2
C	ZD-9505 Hinge Jamb	1
D	ZD-2503B Hinge Roll with Vinyl	1
E	ZSS-1102 Curb Filler	1
F	FAB4004 Polycarb Strike with Magnet	1
G	FAB984B Polycarb Sweep	1
H	Through-the Glass Pull	1
I	Magnetic Catch with Glazing Vinyl	1
J	Fixed Panel (3/8" Clear Glass)	1
K	Door Glass (1/4" Clear Glass)	1
L	Glass Blocks	4
M	Screws #8x2 FLTHD	6
N	Screws #6x7/16 SELF TAPPING	5
O	ZV935 Anchors GREY	6
P	ZV906 Lg. Wedge Horz. Vinyl (Top/Bottom)	2
Q	ZV909A Sm. Wedge Vertical Vinyl (Side)	2



STEP 1

Locate the centerline of the base by measuring and determining middle. Measure width of opening on this centerline and prepare to cut ZSS-3101 curb **A** 1/16" less than overall measurement. **(Figure 1)**



FIGURE 1

STEP 2

Once ZSS-3101 **A** is cut and tested to fit, apply a 1/4" bead of HMI X3 Premium Grade Silicone or equivalent, along the length of the underside of the curb **(Figure 2)** and set in place along centerline **Make sure weep hole is to the inside of the shower/tub.**



FIGURE 2

Pro Install Tip: Firmly tape down curb after applying silicone so as not to bump it out of place during remainder of installation.

STEP 3

Place ZD-1006 channel **B** on wall where hinge side will be located and slide down into ZSS-3101 **A** until it rests on the legs inside the curb. It is important to a level* to make sure channel is plumb before marking pre-drilled holes. **(Figure 3)** Once plumb, mark holes then remove channel and prepare drill.



FIGURE 3

STEP 4

Using a HMI 3/16" Diamond Drill Bit or equivalent, drill your 3 marked holes. Once drilled, make sure to blow out and dry the holes then fill the holes with HMI X3 Premium Silicone or equivalent. If support behind wall is not present use the provided anchors. Gently tap the anchors (3) ZV935 Grey in until flush with wall. **(Figure 4)**



FIGURE 4

Pro Install Tip: For best result when using HMI Diamond Drill Bits, place the drill bit at an angle to the wall as you start to drill, then angle up so it is perpendicular to the wall and continuing to drill **(Figure 4)** Make sure to remove debris and any moisture from holes prior to applying silicone.

STEP 5

Using HMI X3 Silicone, fill the bottom inside corner on the hinge side of the installed curb **A** then set ZD-1006 **B** back in place in the curb and run (3) screws #8x2 FLTHD **M** in until snug. Be careful not to over tighten **(Figure 5)**



FIGURE 5

STEP 6

Repeat steps 3, 4 and 5 for fixed panel side of opening.

STEP 7

With wall channels securely in place, it's time to dry fit the door and panel. Place two 1/8" glass blocks **L** into ZSS-3101 **A** curb on the fixed panel side, one on each end, set about 2' in from ends. Carefully set 1/4" glass panel **J** down in ZSS-3101 **A** and onto glass blocks **L**. Slide panel **J** over into vertical ZD-1006 **B** channel as far as possible towards the wall. **(Figure 6 & 7)**



FIGURE 6

STEP 8

Measure and cut remaining piece of ZSS-3101 **A** header as you did for the curb in Step 1. Install header and attach from inside the shower using (2) screws #6 x 17 SELF TAPPING **N** and attaching through the header and into the ZD-1006 wall channels **B** **(Figure 8)**



FIGURE 7

Pro Install Tip: Install kits will have pairs of 1/8" Glass Blocks and 1/61" Glass Blocks included. We recommend using the 1/8" blocks for this installation. The thinner blocks can be used to correct outgates if needed. **(Figure 9)**



FIGURE 9



FIGURE 8

PLEASE NOTE: Parts **C** Hinged Jamb, **D** Hinge Rail with Vinyl and **K** Door Glass will ship pre-assembled on complete units. For installation instructions below, reference to “Door” indicates the assembled door.

STEP 9

Take door and slide ZD-9505 **C** over ZD-1006 **B** as far as possible and temporarily set on ZSS-3101 curb **A**. Keep a hand on the door to prevent it from falling. Adjust door and panel equally until there is a vertically consistent 3/16” gap between both pieces of glass by sliding each towards the other until desired gap is achieved. It is important to adjust both pieces alternately as you adjust to avoid pulling one side out too far. Once door and panel are aligned with the proper gap, use the supplied glazing vinyl to secure the fixed panel. Install ZV-906 **P** (larger wedge shape) at the top and bottom of the panel on both the inside and outside of the unit, and ZV-909A **Q** (smaller wedge) along the vertical edge, making sure to install vinyl on the outside of the enclosure only. **(Figure 10-13)**

STEP 10

Carefully remove door **K**. Take measurement from the edge of the panel glass **L** to the face of the ZD-1006 hinge jamb **B**. **(Figure 13)**. Using this measurement, proceed to cut the ZSS-1102 Curb and Header Fillers **E** to this dimension, then snap the filler into ZSS-3101 curb and header **A** making sure metal lip is to outside of unit. **(Figure 14-15)**



FIGURE 10



FIGURE 11



FIGURE 12



FIGURE 13



FIGURE 14



FIGURE 15

STEP 11

Set door back into place and adjust again to get 3/16" gap between panels. Make sure ZD-9505 hinge jamb is on ZSS-1102 curb filler. Using a #31 drill bit, drill two pilot holes in the ZD-9505 using top and bottom holes as template. Attach with 2- #6x3/8 screws. Completely open and close the door a few times, then drill the middle hole and attach with #6x3/8 screw. **(Figure 17)**

STEP 12

Attach FAB4004 polycarb strike **G** onto exposed edge of 3/8" glass panel and make sure it is adjusted down so that the bottom edge is also sitting on the ZSS-1102 curb giller **F**. **(Figure 18)**

Trim top if necessary to make it fit between Header filler **(See detail A and Figure 19)**. Close door, apply vinyl and mag catch **I** so that they line up with magnet in FAB4004. Apply FAB984B **G** to bottom of door and fabricate if necessary. **(See detail B and Figure 20 for options)**.

STEP 13

Attach back-to-back handle and run bead of HMI X3 Premium Silicone or equivalent along entire inside and outside of unit and inside of vertical panel at the wall jamb.. Be careful not to clog up the weep hole in the curb.



FIGURE 16



FIGURE 17



FIGURE 18

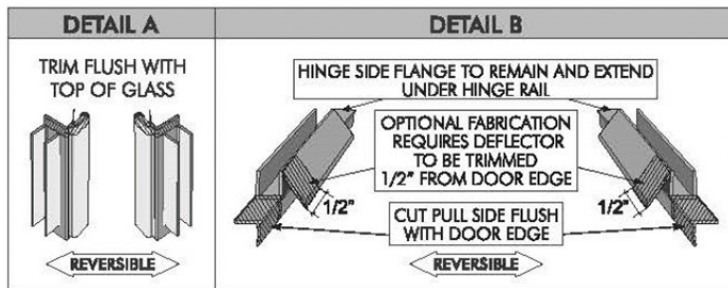


FIGURE 19

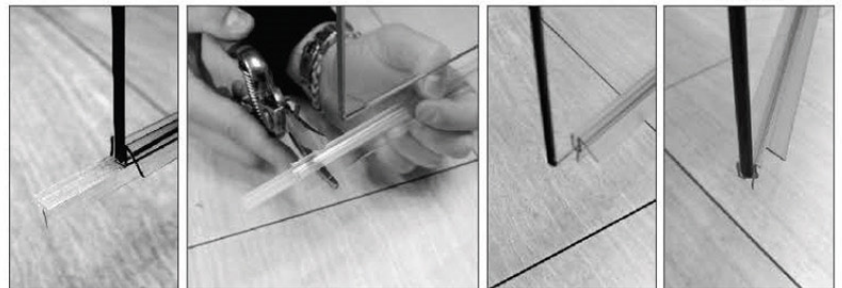


FIGURE 20